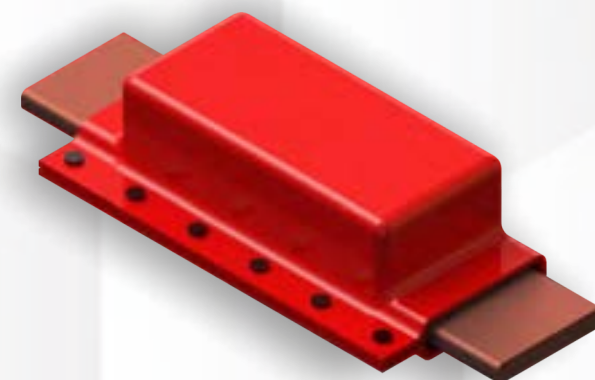
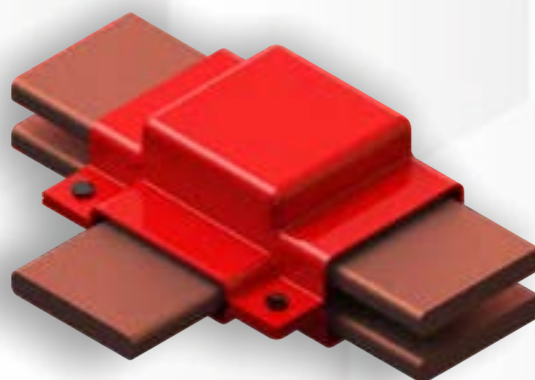
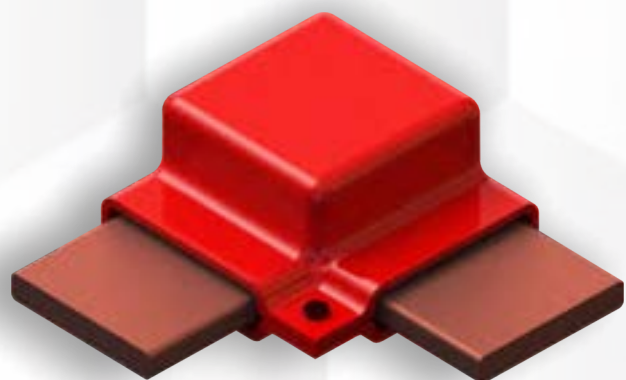
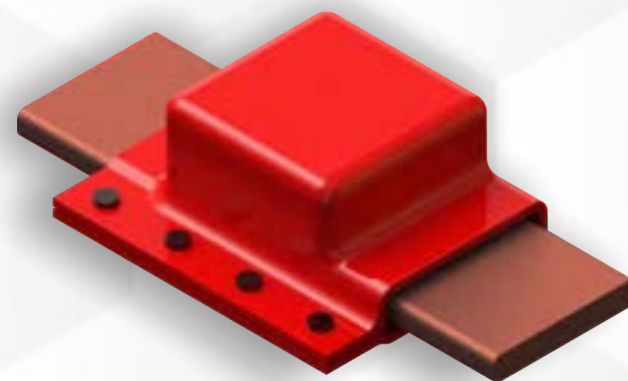
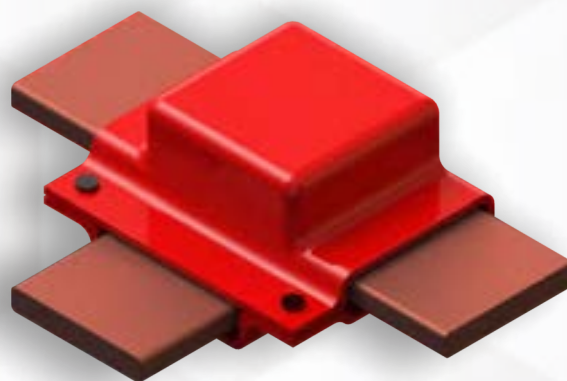
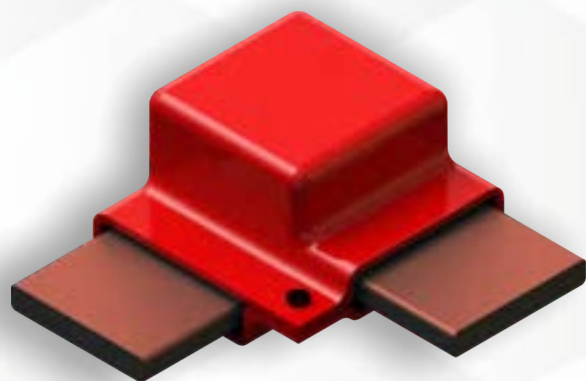




VINYL
BUSBOOT
The Ultimate Insulation



Great savings in Switchgear component cost by investing in Busboot

Bus boot - Vinyl is flexible electrical insulating boot / shroud for busbar and switchgear connections upto 36KV. These pliable boots can be installed, removed or replaced in few minutes. Made from specially formulated Polyvinyl Chloride (PVC) material to provide excellent electrical insulation and to withstand higher operating temperature continuously.

Busboot provides reduction in air clearance, which helps designing compact panels; thereby reduces the material costs by saving in busbar lengths, sheet metal components, etc

FEATURES & BENEFITS:

- ❖ The most cost effective way to insulate connections in Switchgears.
- ❖ High Dielectric Strength.
- ❖ Suitable for insulating busbar joint works applications (tees, elbows, etc.)
- ❖ Easy to Install or Remove as often as required.
- ❖ Complete with fasteners.
- ❖ Highly resistant to UV rays and ozone. Good for outdoor or indoor applications.
- ❖ New design moulds can be developed in a week.
- ❖ Unique Over-lapping design ensures additional protection against Flash-over.
- ❖ Excellent electrical & thermal properties.
- ❖ Customized design possible for any shapes or connections.
- ❖ Low tooling cost...a fraction of injection molding.
- ❖ No internal stress molded into parts.
- ❖ Large parts can be made without significant tooling investment.

STANDARDS:

- ❖ UL Certified (File No. E335936)
- ❖ Tested to ANSI C 37.20.2 Standards for medium voltage switchgear application upto 36KV.

Technical Specifications

Test Description	Recorded Value	Test Method
1. Dielectric Strength	16 KV/mm. (min.)	ASTM D149
2. Tensile Strength	12 N/mm ² (min.)	ASTM D638
3. Elongation	350% (min.)	ASTM D638
4. Density	1.23 gm/cm ³	ASTM D792
5. Hardness	65 ± 5 shore A	ASTM D2240
6. Continuous Operating Temp.	-20°C to 115°C	IEC 216
7. Flammability	Pass	UL 94-V0

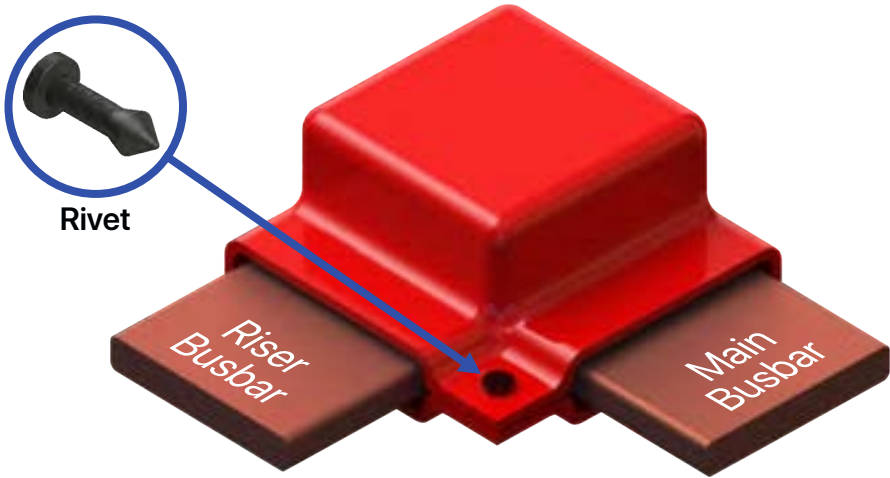
Recommended Thickness

Voltage	Thickness (min.)
3.3 kV	1.25 mm.
12.0 kV	2.20 mm.
18.0 kV	3.10 mm.
24.0 kV	3.80 mm.
38.0 kV	5.50 mm.

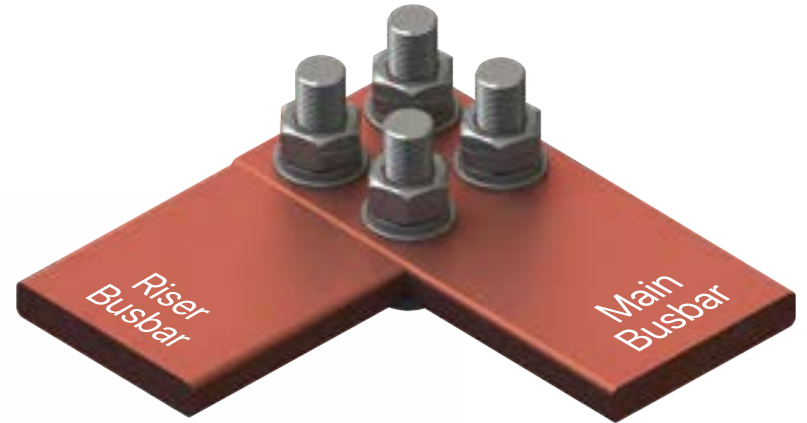
L - CENTERED



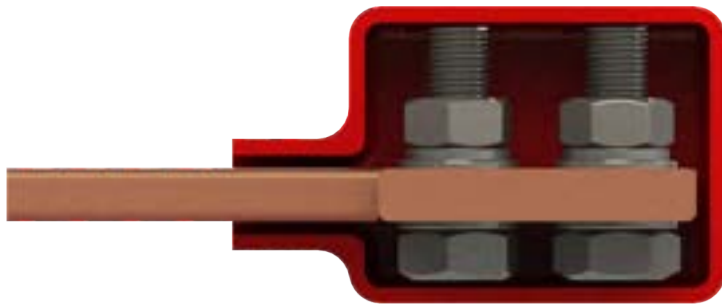
Photographs presented are for representation purpose only



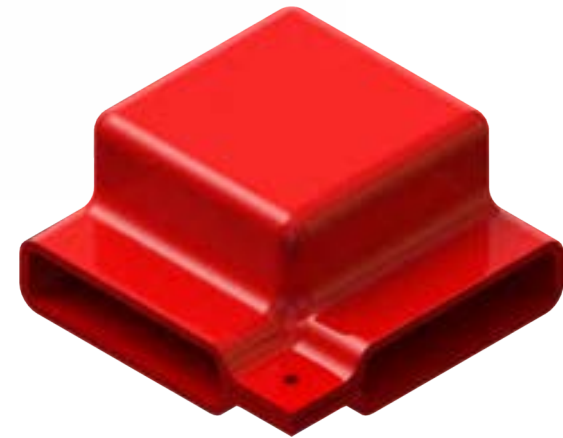
Final product assembly



Busbar assembly where this product is intended to be mounted



Cut-Section of the product mounted on the busbar assembly

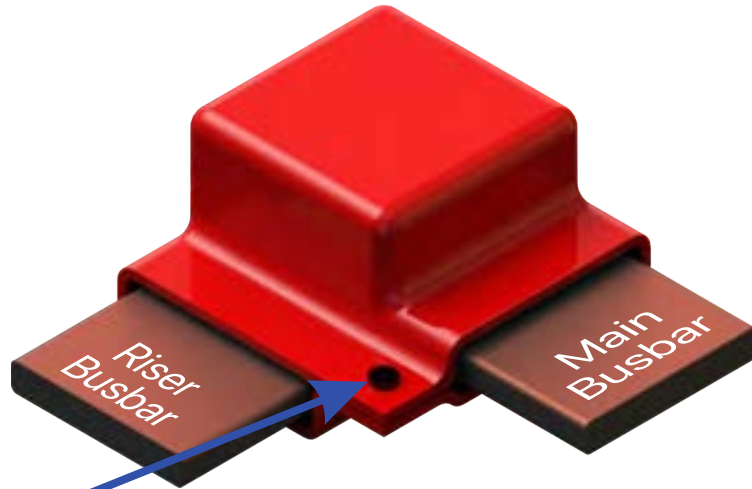


Product

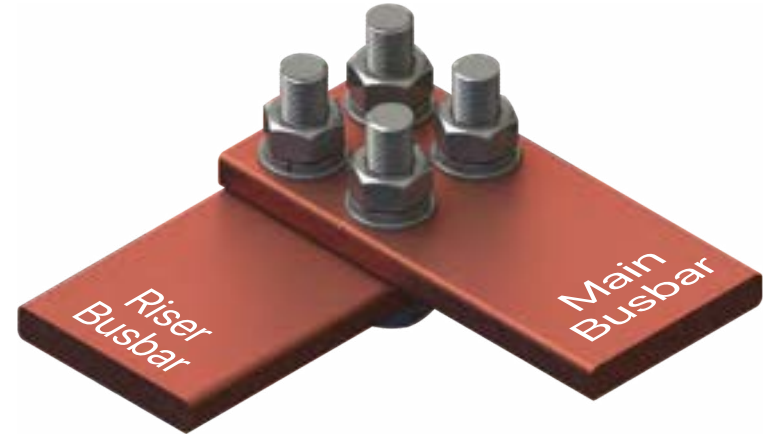
L OFF CENTERED

BUSBOOT^{VINYL}

Photographs presented are for representation purpose only



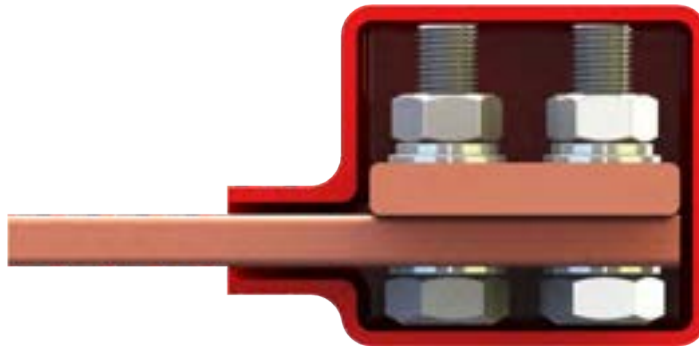
Final product assembly



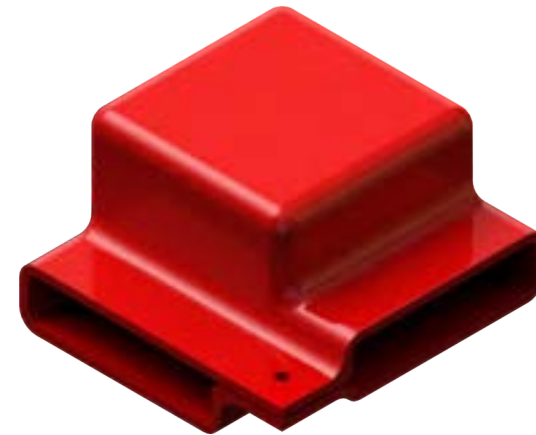
Busbar assembly where this product is intended to be mounted



Rivet



Cut-Section of the product mounted on the busbar assembly



Product

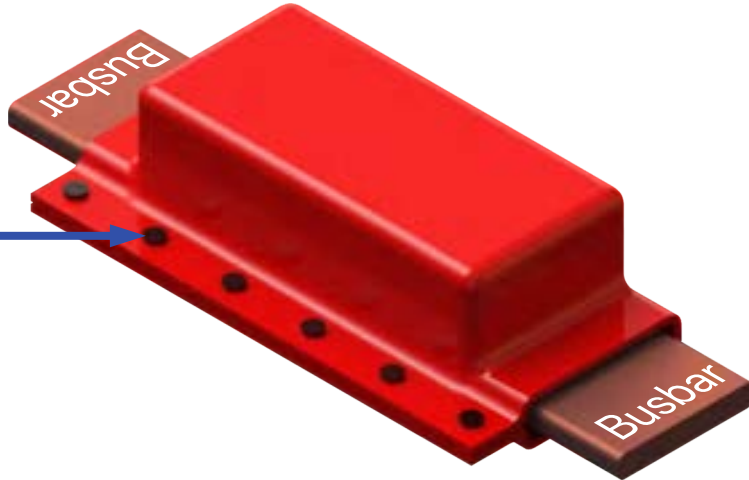
STRAIGHT CENTERED

BUSBOOT^{VINYL}

Photographs presented are for representation purpose only



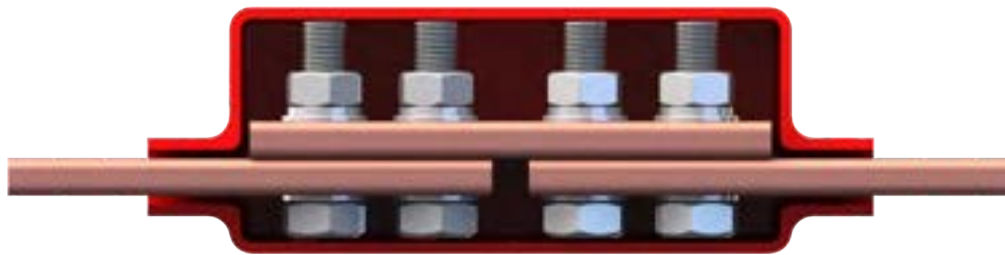
Rivet



Final product assembly



Busbar assembly where this product is intended to be mounted



Cut-Section of the product mounted on the busbar assembly

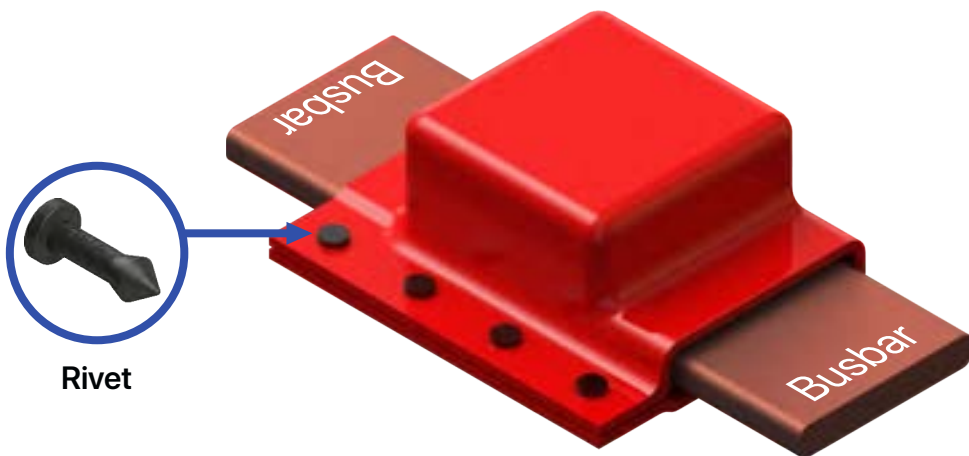


Product

STRAIGHT OFF CENTERED

BUSBOOT^{VINYL}

Photographs presented are for representation purpose only

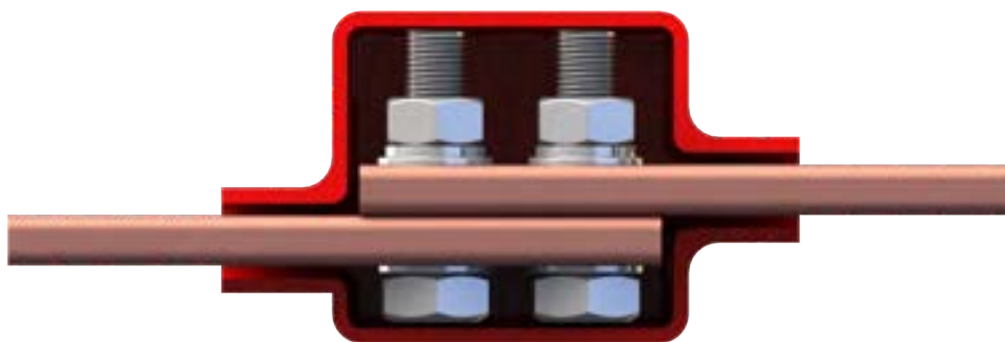


Rivet

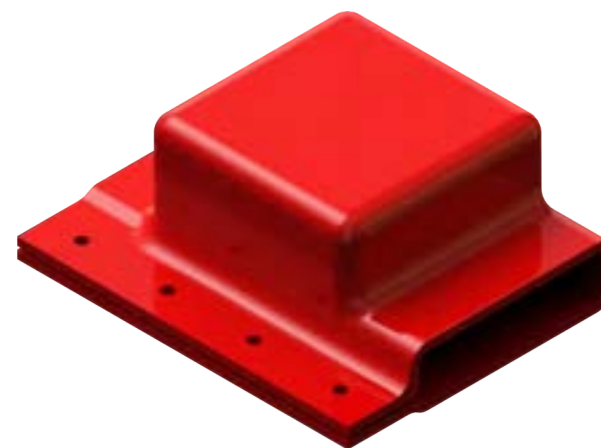
Final product assembly



Busbar assembly where this product is intended to be mounted



Cut-Section of the product mounted on the busbar assembly



Product

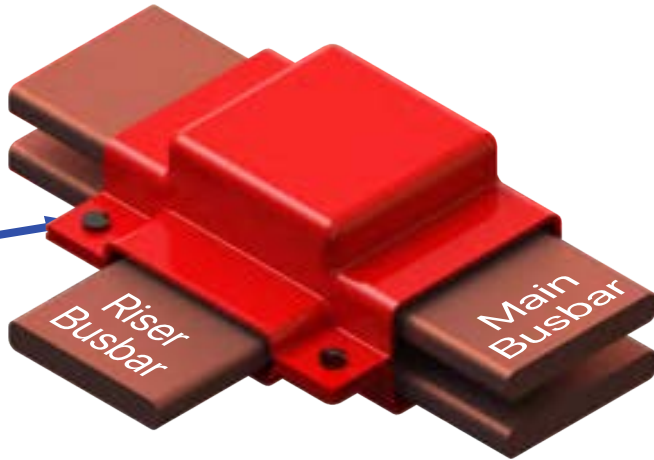
T - CENTERED

BUSBOOT^{VINYL}

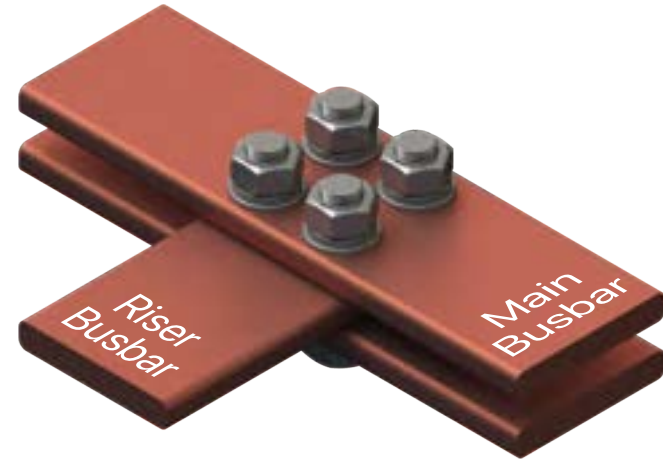
Photographs presented are for representation purpose only



Rivet



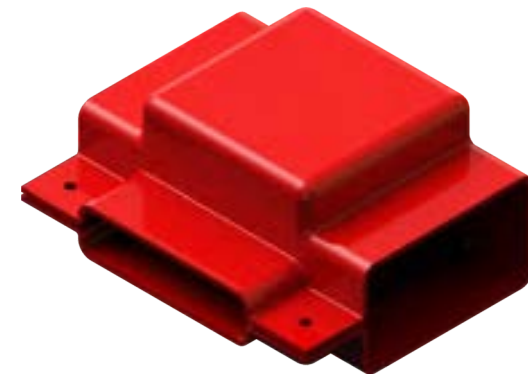
Final product assembly



Busbar assembly where this product is intended to be mounted



Cut-Section of the product mounted on the busbar assembly

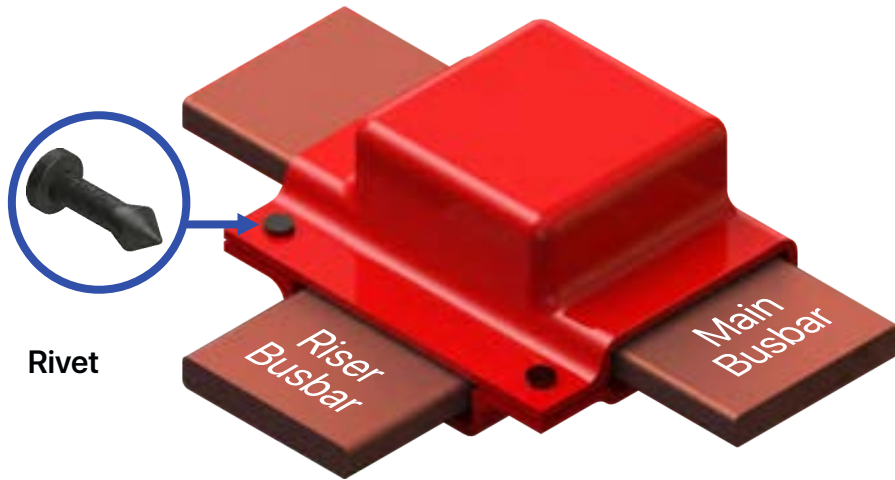


Product

T - OFF CENTERED

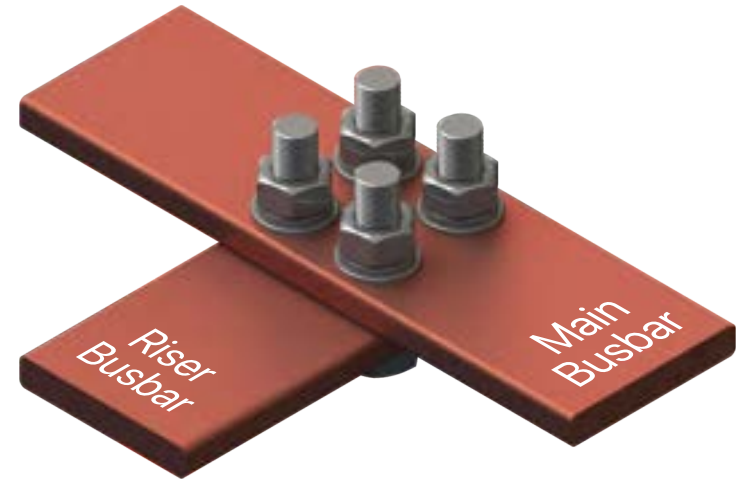
BUSBOOT^{VINYL}

Photographs presented are for representation purpose only

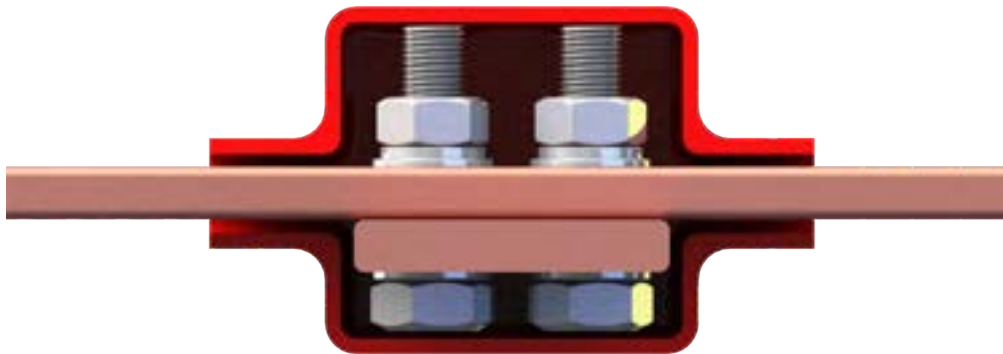


Rivet

Final product assembly



Busbar assembly where this product is intended to be mounted



Cut-Section of the product mounted on the busbar assembly

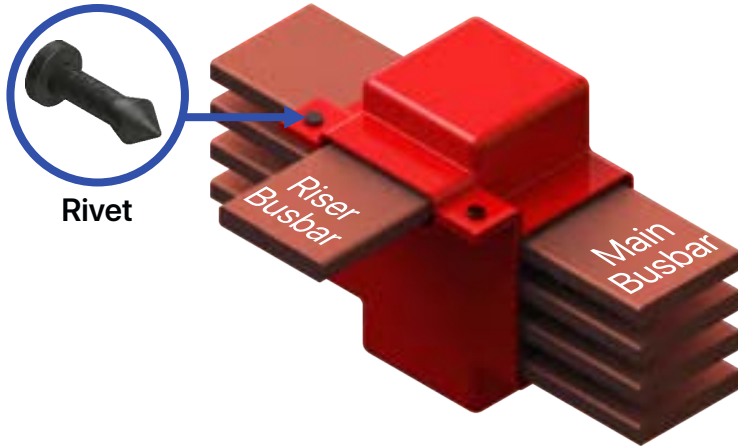


Product

DROP LINK CONNECTION BOOTS

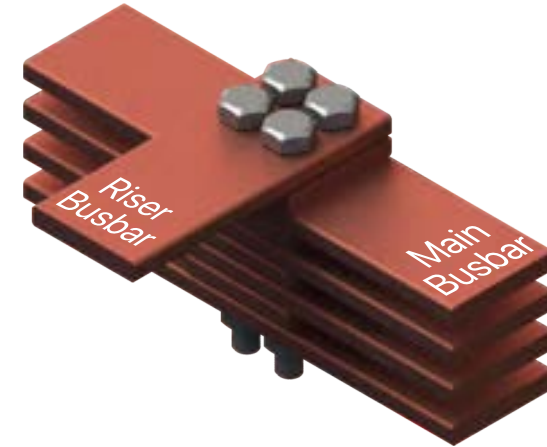
BUSBOOT^{VINYL}

Photographs presented are for representation purpose only

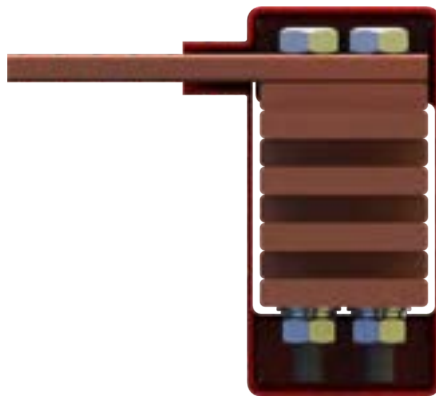


Rivet

Final product assembly



Busbar assembly where this product is intended to be mounted



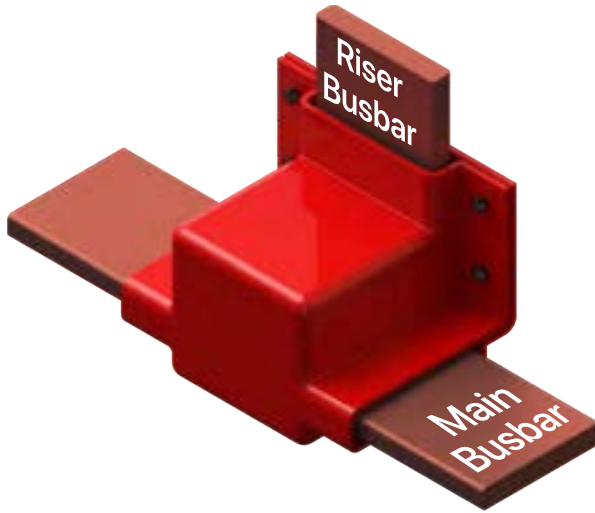
Cut-Section of the product mounted on the busbar assembly



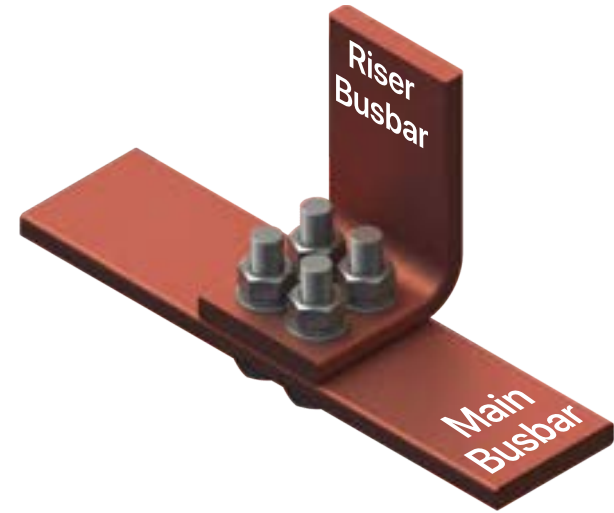
Product

T BOOTS W/90° RISER

Photographs presented are for representation purpose only



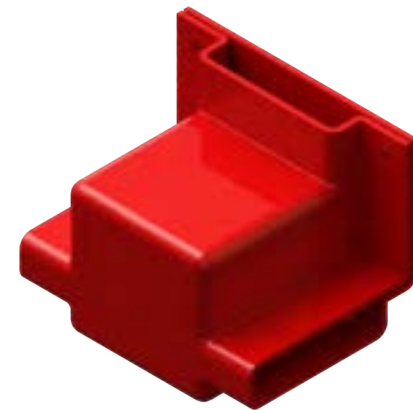
Final product assembly



Busbar assembly where this product is intended to be mounted



Cut-Section of the product mounted on the busbar assembly



Product

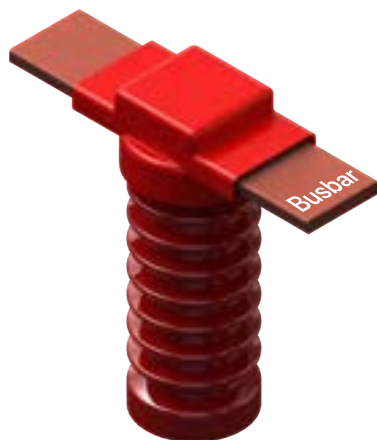
STANDOFF INSULATOR BOOTS

BUSBOOT^{VINYL}

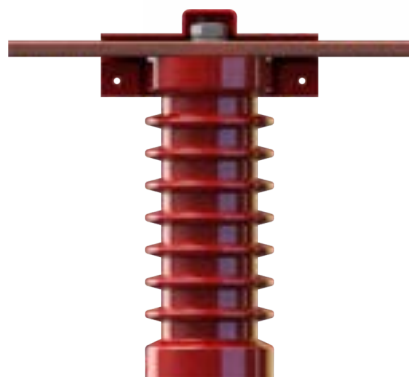
Photographs presented are for representation purpose only



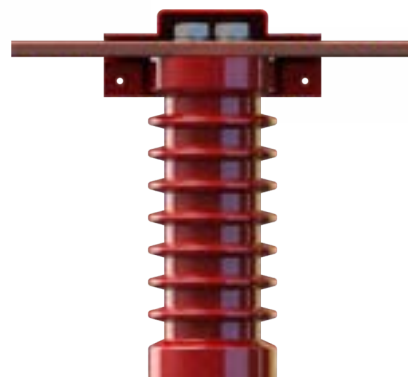
Final product assembly



Busbar assembly where this product is intended to be mounted



Cut-Section of the product mounted on the busbar assembly



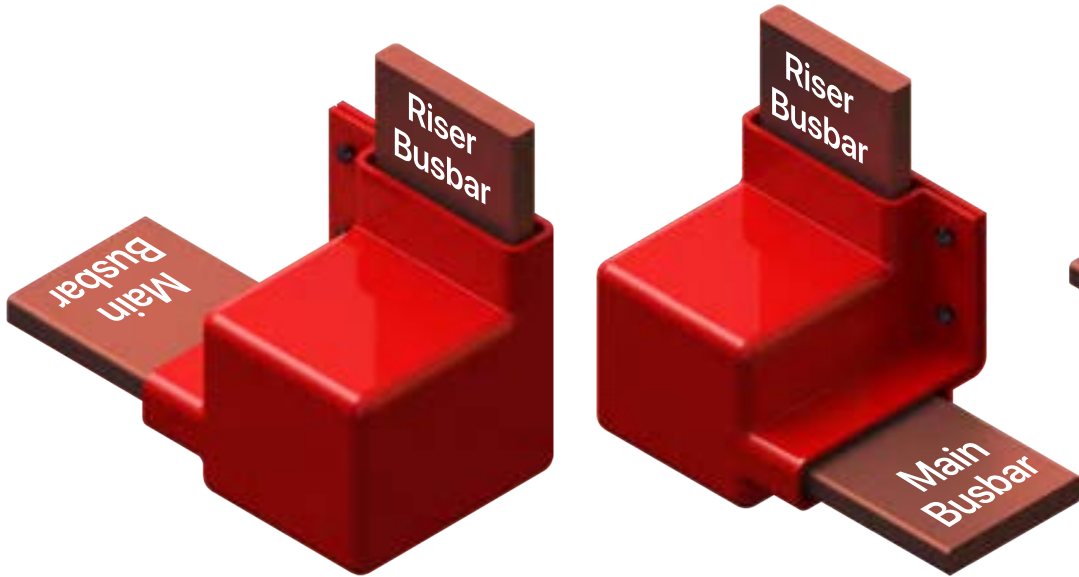
Product



L Boots W/90° Riser



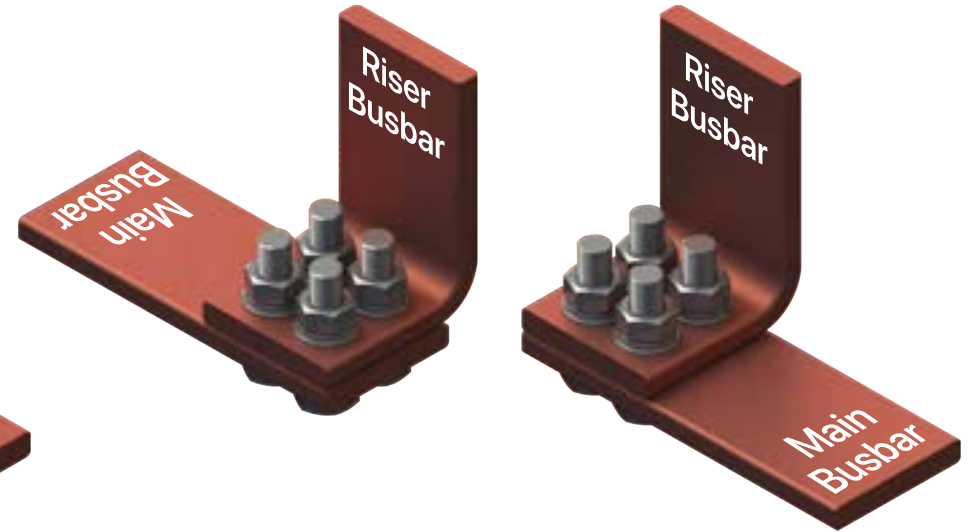
Photographs presented are for representation purpose only



LHS Boot Assembly

RHS Boot Assembly

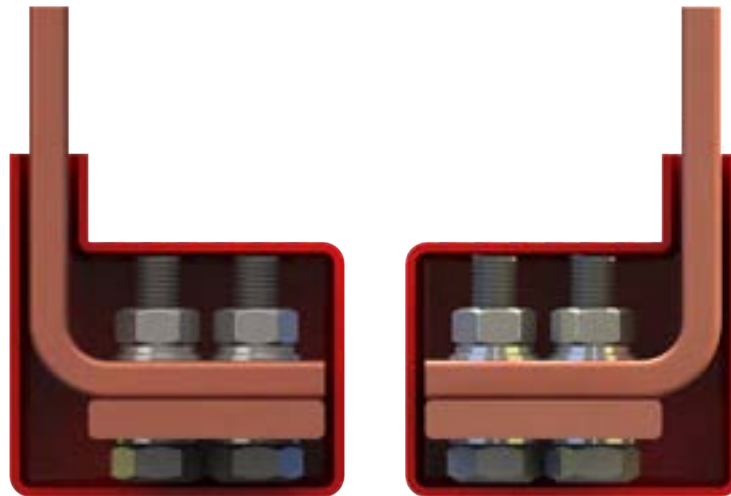
Final Product Assembly



LHS Busbar Assembly

RHS Busbar Assembly

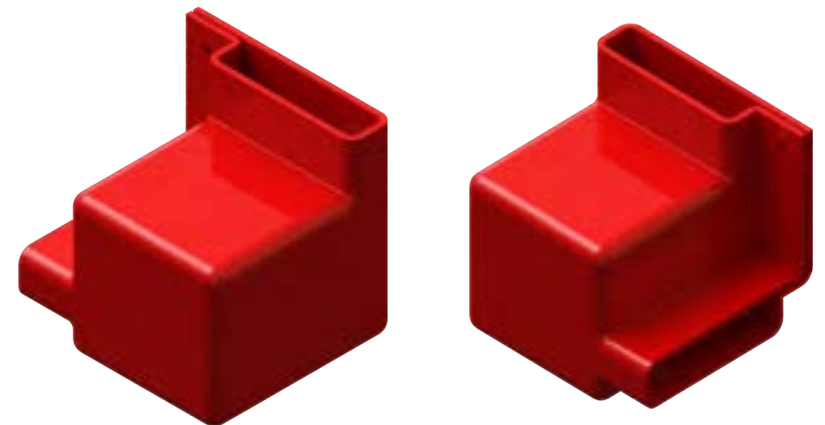
Busbar assembly where this product is intended to be mounted



LHS Section

RHS Section

Cut-Section of the product mounted on the busbar assembly



LHS

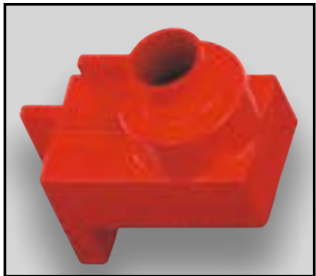
RHS

Product

- LHS : Left Hand Side
- RHS : Right Hand Side

CUSTOMIZED BOOTS

BUSBOOT^{VINYL}



GES 1359



GES 1360



GES 1361



GES 0084



GES 320



GES 569



GES 735



GES 810



GES 814



GES 815



GES 816



GES 825



GES 1129



GES 1133



GES 1138



GES 1141



GES 1145



GES 1358

• Products Enumerated in this catalogue are available within 48 hours without tooling or setup charges.

• If you don't see your particular part listed please call [91-22] 2967 5415/16/17 or fill in your request and mail the Quickquote form supplied to [91-22] 2868 8990.

CUSTOMIZED BOOTS

BUSBOOT^{VINYL}



GES 393



GES 1356



GES 112C



GES 1345



GES 1346



GES 1348



GES 1350



GES 1357



GES 1347



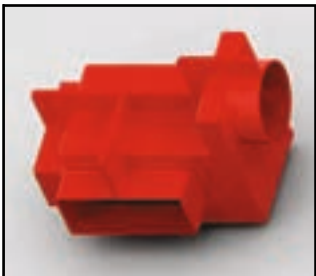
GES 1349



GES 1344



GES 1343



GES 1351



GES 1352



GES 1353



GES 1354



GES 1355



GES 752

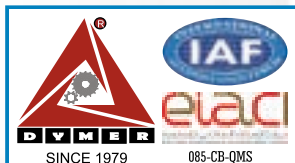
• Products Enumerated in this catalogue are available within 48 hours without tooling or setup charges.

• If you don't see your particular part listed please call [91-22] 2967 5415/16/17 or fill in your request and mail the Quickquote form supplied to [91-22] 2868 8990.



www.eleexo.it
www.galathermo.com

Send your request to:
contact@eleexo.it
info@galathermo.com



GALA THERMO SHRINK PVT. LTD.

An ISO 9001, ISO 14001 & ISO 45001:2018
Certified Company

M : 88791 22705 | E: info@galathermo.com | W: www.galathermo.com